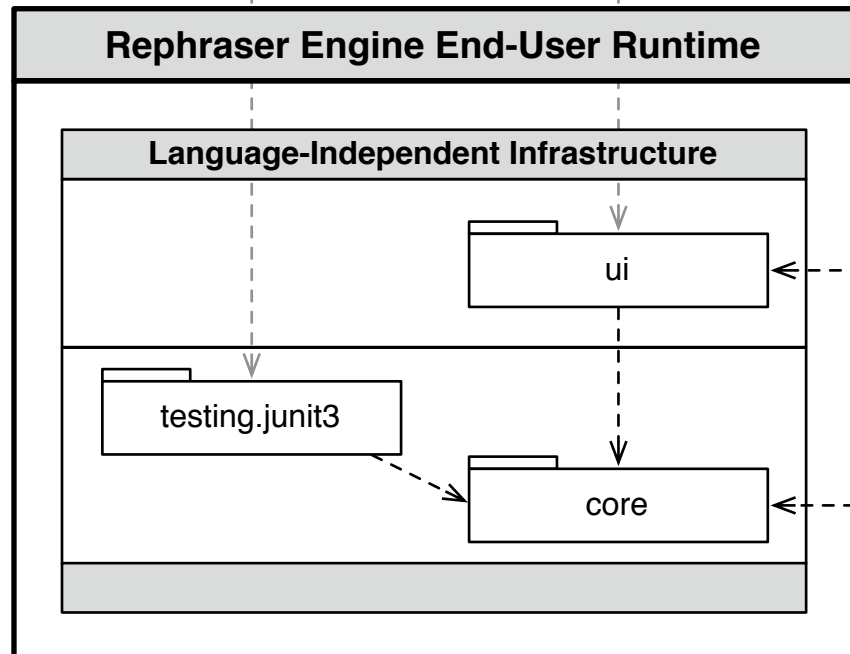


REPHRASER engine



LEGEND

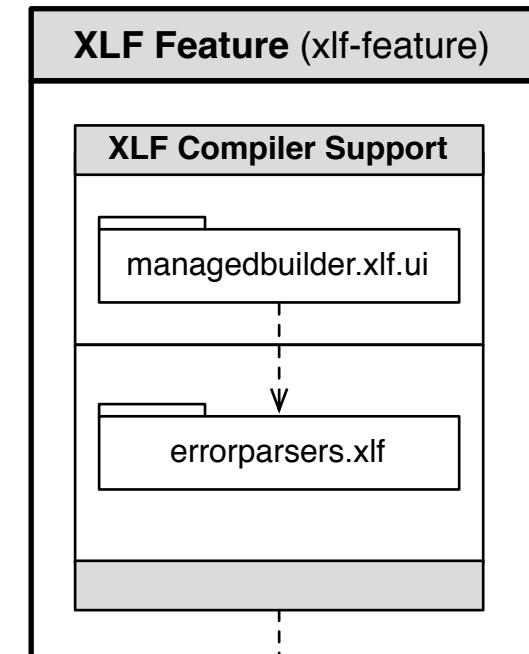
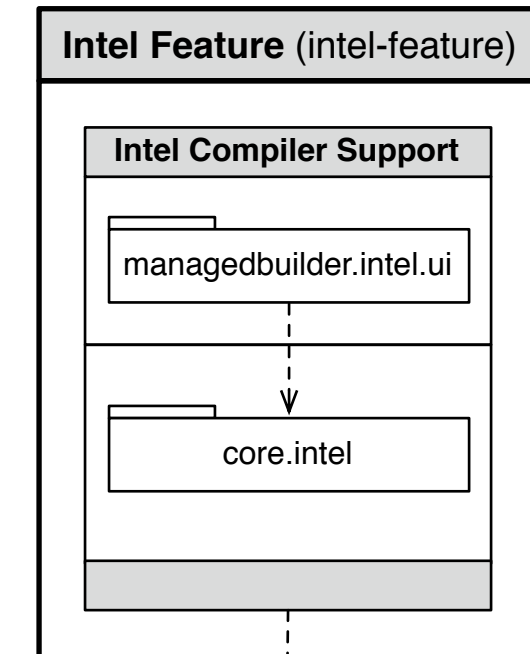
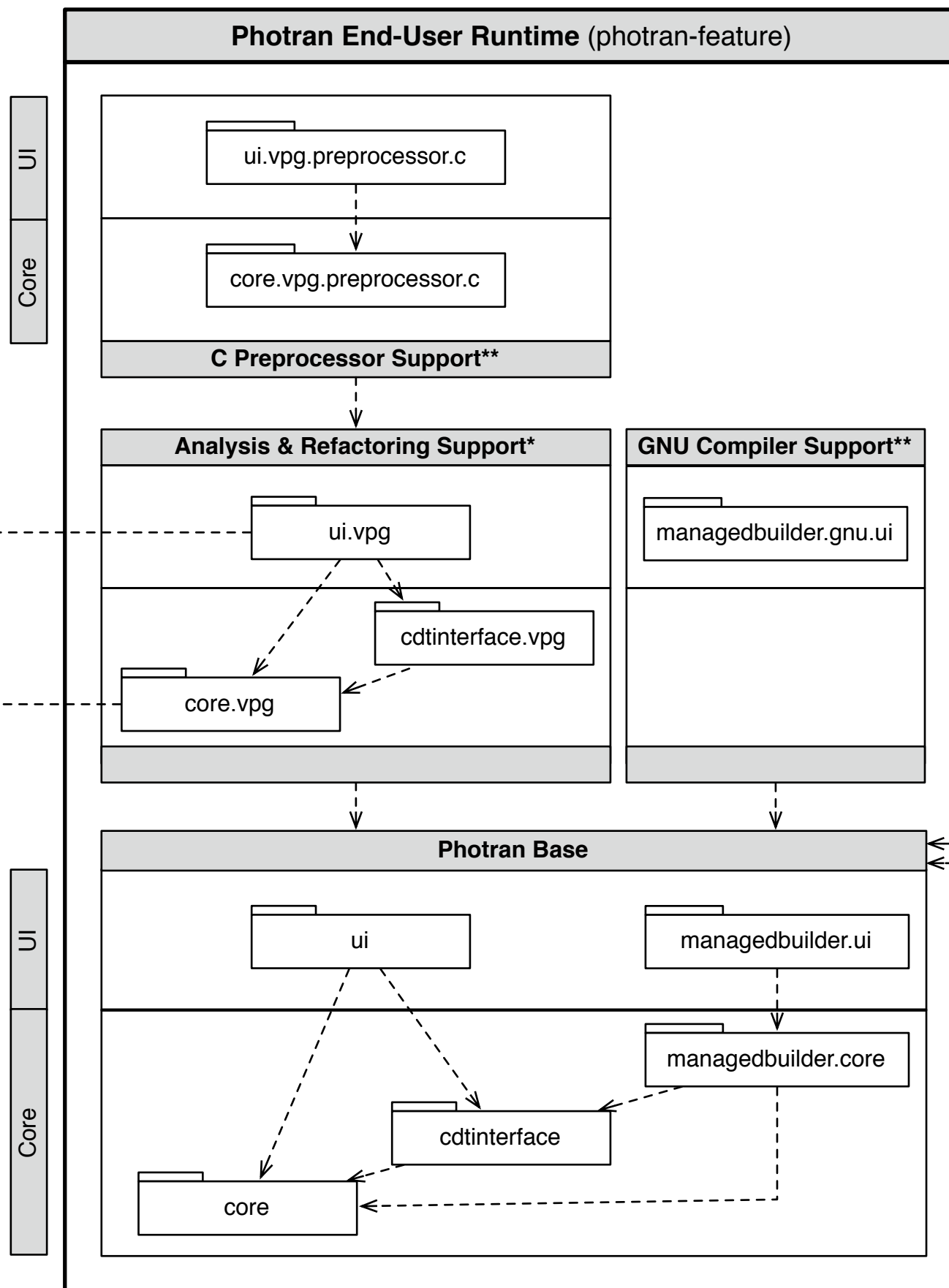
Each folder denotes a single Eclipse plug-in. Each plug-in consists of a single project in CVS named org.eclipse.photran.<name> or org.eclipse.repraserengine.<name>.

Thickly-bordered gray boxes denote Eclipse features. The smaller gray boxes inside denote conceptual subdivisions of each feature.

Dotted arrows denote dependencies. To minimize clutter, arrows between gray boxes denote a dependency between components; in general, the core components of one component depend on the core components of another, and the UI components depend on both core and UI components.

Note, in particular, that the Repraser Engine does not depend on CDT, because it is reused in other refactoring tools that do not (and should not) require CDT.

PHOTRAN



* Analysis and refactoring support was originally in a separate feature but is included in the main Photran feature for convenience. A different parser, AST, etc. could be contributed to Photran by replacing this feature with a different one. Such a feature was prototyped at IBM Research in 2008.

** C Preprocessor support and GNU compiler support could be in separate features but are included in the main Photran feature for convenience.